

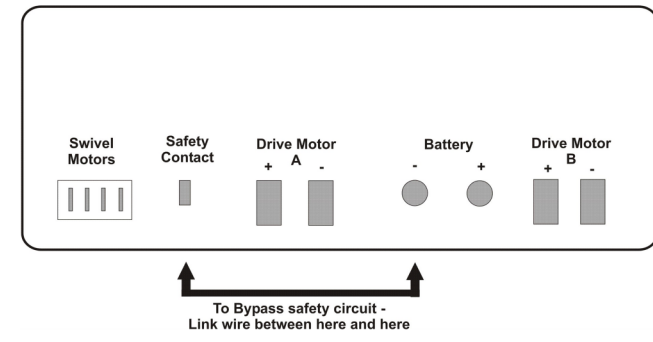
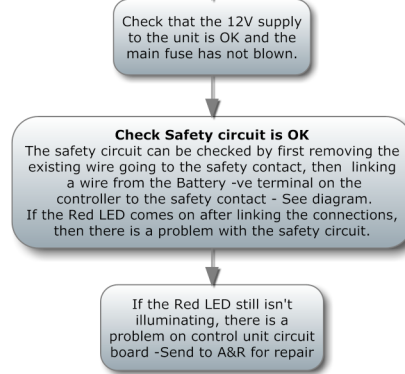
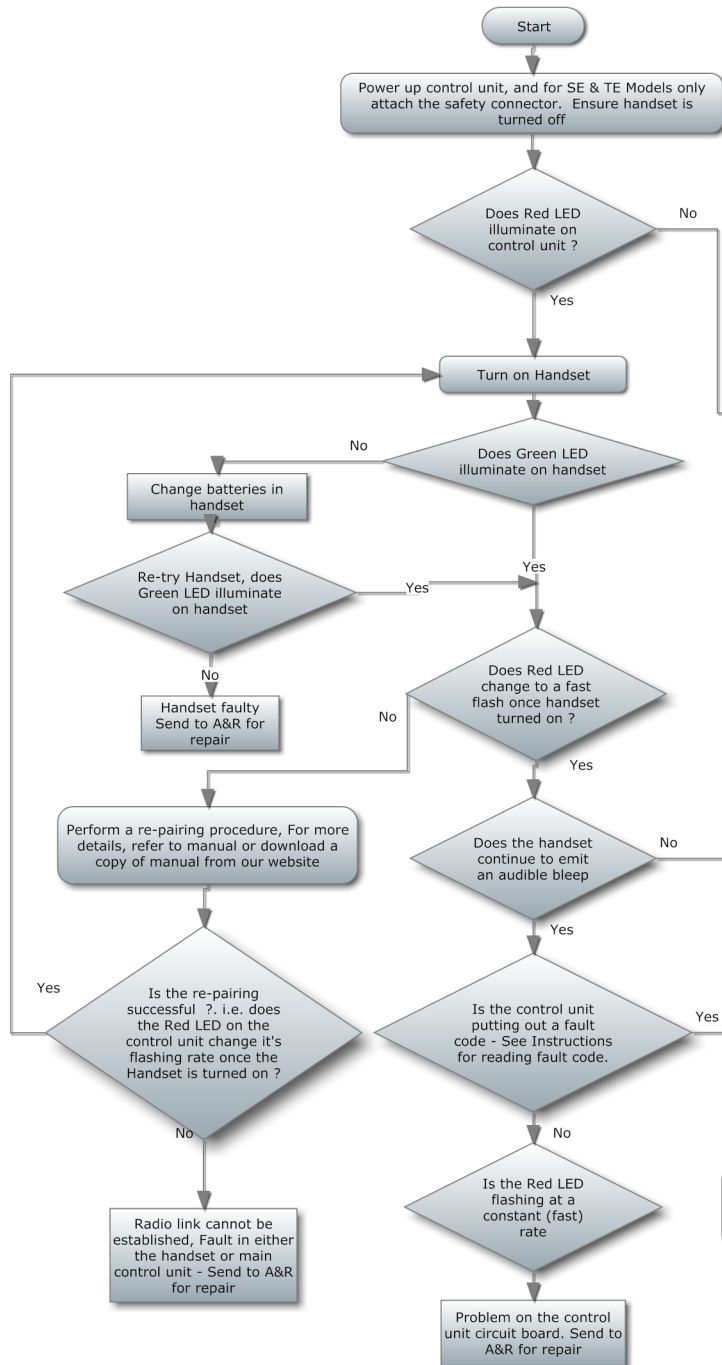
# Truma Mover S, SE, TE Fault Flowchart V1.1

For Sales & repair of Truma / Carver Mover and heater products see our website

## A&R Electronic Developments Ltd

Unit 14 Littleton Business Park  
Littleton Drive  
Cannock WS12 4TR  
England

Tel: +44 (0)1543 579302  
web: www.arellectronics.co.uk  
email: rsol@arellectronics.co.uk



- Instructions for reading the fault code**
- Both the controller and the handset should be switched on
  - The handset should be emitting a beeping sound
  - The fault code is a series of 8 flashes (either short flash or long flash) emitted from the Red LED on the controller. There is then a short pause and the fault code is repeated.
  - Take a pen & paper and jot down the series of 8 Short (S) or Long (L) flashes, then check subsequent repeats for the same code.
  - A typical code will be of the form **SSSS LLLL** although the sequence will be different

- Common Fault Codes**
- SLSS SLSS** - 68 Low supply Voltage - Check battery and all connections between battery and main controller
  - SLSL SLLL** - 87 Low supply voltage - Make checks as above
  - SLSL LSSL** - 89 Low supply voltage - Make checks as above
  - SLLS SLLS** - 102 Motor(s) not detected - Motor fault or fault in wiring to the motor(s)

**Download Operating Manual**

**Mover S** - [http://www.arellectronics.co.uk/PDF/Truma\\_Caravan\\_Mover\\_M2S.pdf](http://www.arellectronics.co.uk/PDF/Truma_Caravan_Mover_M2S.pdf)

**Mover SE, TE** - [http://www.arellectronics.co.uk/PDF/Truma\\_Caravan\\_Mover\\_M2\\_SE\\_TE.pdf](http://www.arellectronics.co.uk/PDF/Truma_Caravan_Mover_M2_SE_TE.pdf)